

One Step at a Time: Growing a Faculty-Based First Year Experience Programme



**Te Ara Whakamana:
Pathways, transitions and bridges to tertiary education
July 2014
Wellington
Carol Cameron**

What is FYE?

- A peer-mentoring programme
- An attendance & assessment tracking scheme
- A vehicle for leadership development
- A conduit to University services



How we started... 2009



- Applied for seed money (\$120,000 for two years)
- Convened a steering group
- Created FYE framework
- Hired Programme Manager

2010 FYE is Launched

- First group of mentors recruited
- Test group of students:
N = 1,000
- First intervention:
tracking attendance
- Students surveyed
- Stats showing FYE vs.
non-FYE compiled



2011 – The programme grows

- Benchmarking visit to QUT
- Phone interventions added
- Branding embedded
- Student group grows:
N = 1,900
- Mentor videos launched
- Targeted Learning added



FYE Videos

- 16 videos
- Student created and directed
- Key messages across semester
- “We’re here to help” theme



FYE Targeted Learning Sessions



2012 & 2013 FYE Becomes Embedded

- Gets Uni-wide attention
- Becomes sought after by academics
- Becomes key for support staff
- Special mentor groups formed
- Faculty roadshow



2013 FYE Education Launched



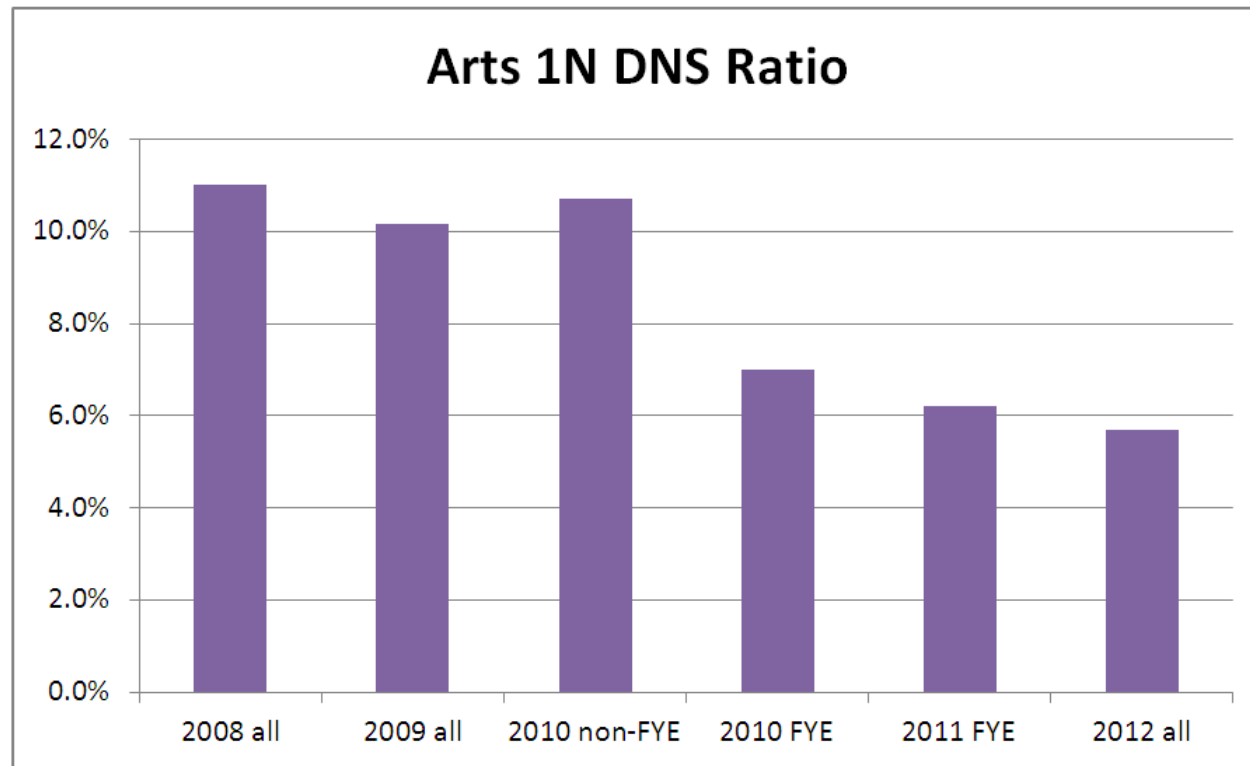
Making It Unique

- 600 Students
- 5 undergraduate programmes
- Tailored for:
 - Practicum
 - Examinations
 - Predictive analytics



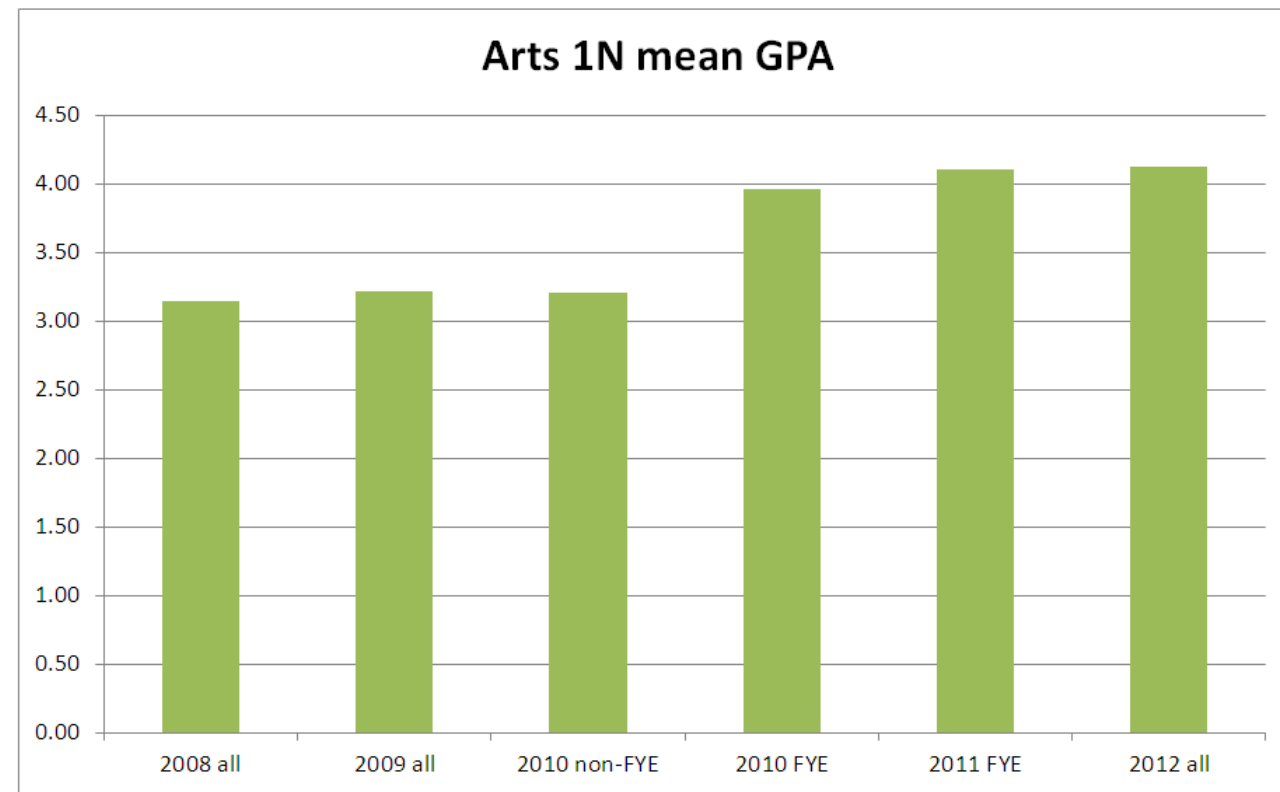
Faculty of Arts Results

	2008 all	2009 all	2010 non-FYE	2010 FYE	2011 FYE	2012 all
Arts 1N DNS Count	986	812	397	347	722	722
Arts 1N DNS Ratio	11.0%	10.2%	10.7%	7.0%	6.2%	5.7%



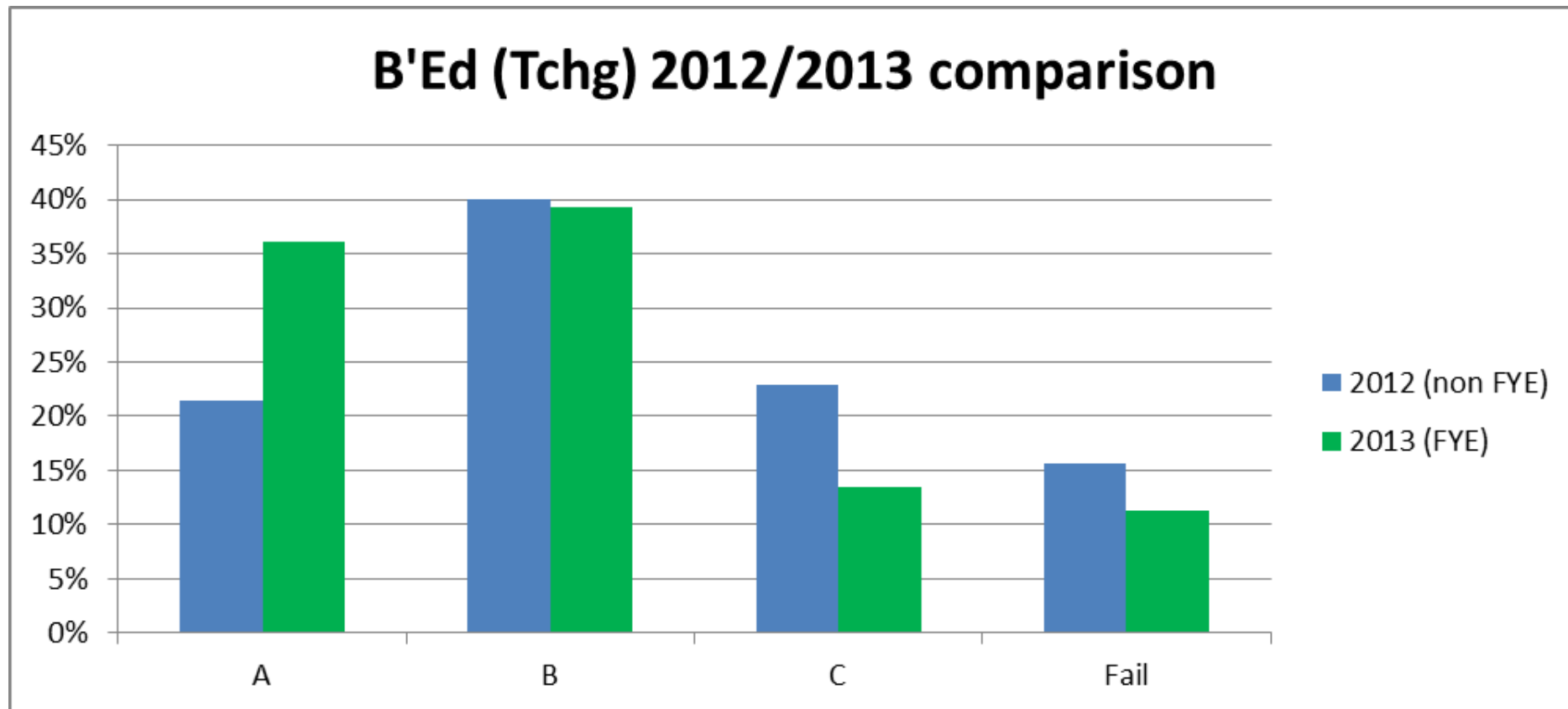
The above shows the ratio of DNS as a percentage of all courses for 1N Arts BA and BA-conjoint students.

	2008 all	2009 all	2010 non-FYE	2010 FYE	2011 FYE	2012 all
Arts 1N mean GPA	3.15	3.23	3.22	3.96	4.11	4.13
95% confidence interval	3.07 to 3.23	3.14 to 3.31	3.13 to 3.30	3.86 to 4.07	4.06 to 4.16	



The above shows the mean average GPA score across all courses for Arts BA and BA-conjoint students (1N) per year. The 2010 figures are broken down by FYE against non-FYE. Subsequent results continue to show a significant improvement.

Faculty of Education Results



2014 - Faculty Administrative Review

- University-wide restructuring of staff
- Engagement separated from academic services
- Student engagement role natural place for FYE



What You Need to Consider

- What problems are you trying to solve?
- Who are your allies?
- How will you reach your audience?
- What types of interventions?
- How will you measure success?
- What will it cost?

