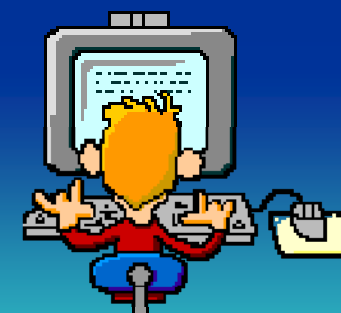


Gateway Programme

Creating Learning Pathways & Opportunities for Senior Students



What is Gateway?

- Government funded initiative - via TEC
- Operated in schools since 2002 - rolled out by decile level to all schools 2009
- Only allows Senior Yr11 -13 students to participate
- Gain workplace qualifications and training
- Adds new dimension to student learning
- Enhances qualifications for all levels of NCEA
- Consolidated period of life skills learning and experiences for the students.

How does Gateway differ from other Work Experience?

- Workplace Learning Integrated into school programme
- Formalised programme between all parties
- Student achievement & attendance monitored
- Workplace learning assessed in workplace
- Credits towards NCEA registered by the school/provider
- Gateway can assist towards satisfactory completion of NCEA L1,2,& 3 - not UE

Benefits to School & Community



- Schools more involved in business community
- Business sector contributes to school - (school business partnerships win - win)
- Extended range of learning opportunities
- Greater appreciation of classroom learning
- Students become better communicators and motivated towards achieving educational standards
- Life skills/potential employment opportunities offered

Where to from Gateway?

- Pathways being developed for students from Yr11 e.g. Nat Certificates within schools
- Transition to tertiary study – direct pathways based on prior learning
- Career pathways based on experiences and knowledge gained – Apprenticeships, Tertiary
- Exploration of career & study opportunities based on experiences for decision making
- Less Youth at Risk – not ‘in risk’



Why the Successes

- Most students gain life skills and better communication skills from Gateway experiences
- Students become more engaged in their individual learning pathways
- Success breeds success – a ‘Can do Attitude’
- Develops decision making skills which encourages exploration of opportunities and choices
- Opens up the world of work & opportunities to the students



And more.....

- Students have skills and experiences to offer to the employment market
- They have Referees
- They have a “working” CV
- They have proven team and workplace achievements
- They make informed choices based on real experiences



It's All About the Learning and Experience!



Questions?

Workshop will cover;

- The role of the Cluster/Coordinator
- Gaining & Retaining employers
- Problem Solving & Trouble Shooting
- Internal School issues
- Recruitment & Selection of students
- Health & Safety Issues
- TEC Guidelines

