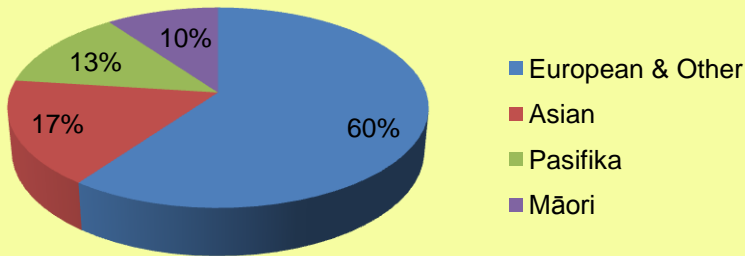
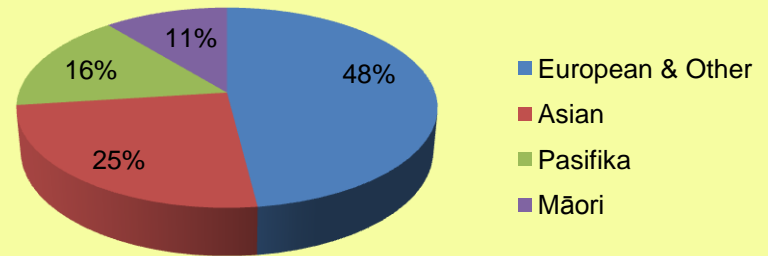


Population

Aucklands Main Ethnic Groups 2006

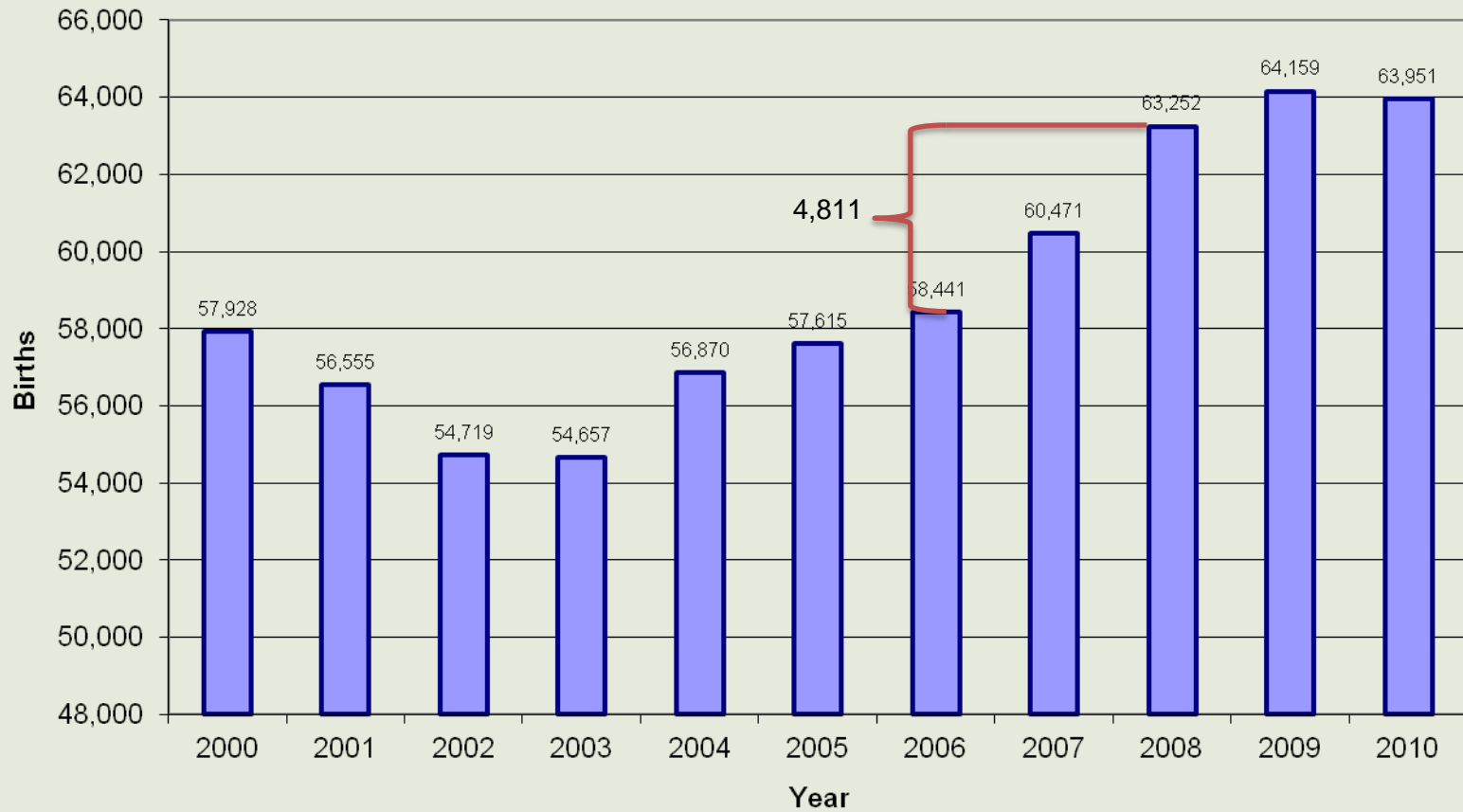


Auckland's Main Ethnic Groups 2021 (projections)

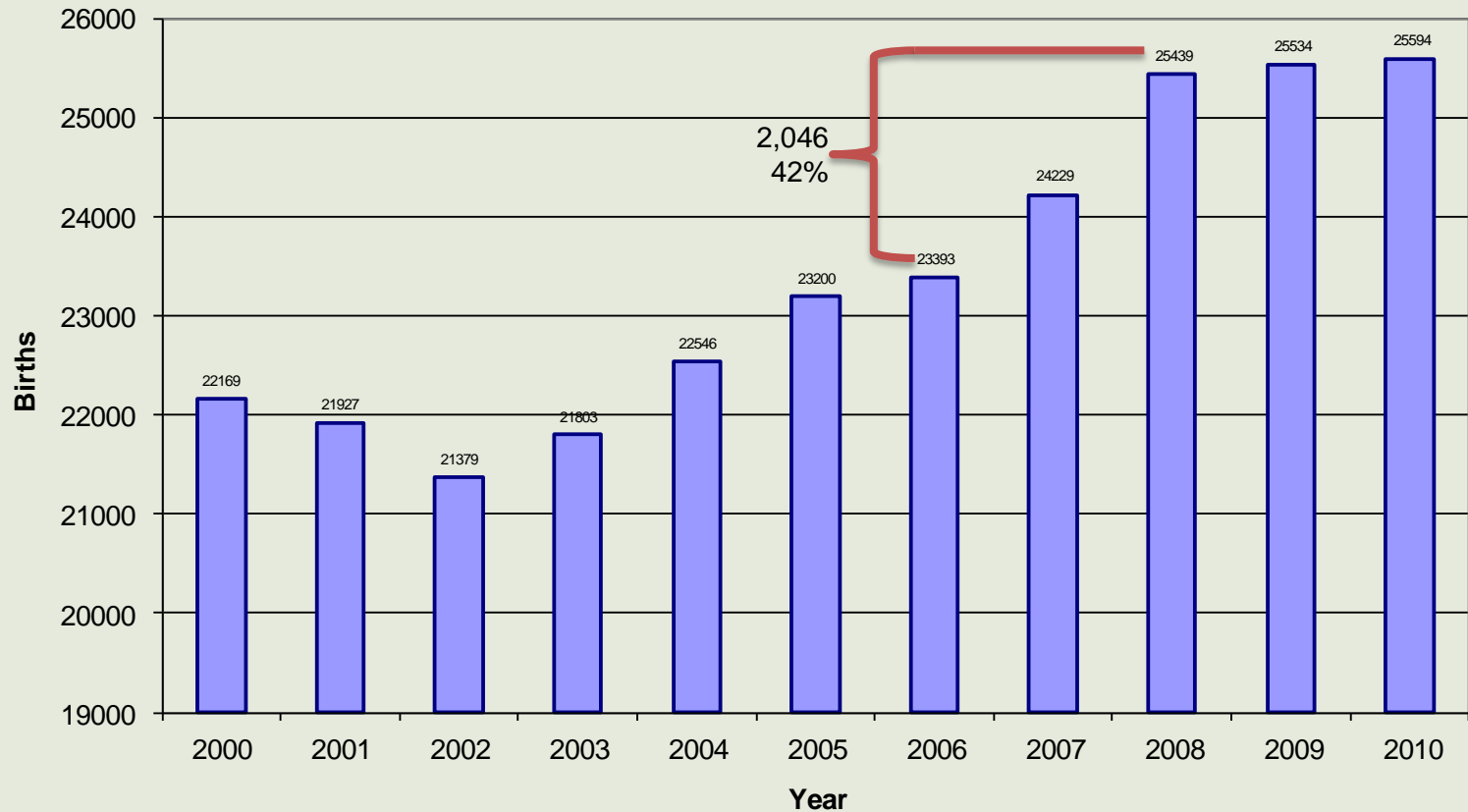


- Auckland is one of the most ethnically diverse regions in New Zealand with significant populations of Māori, Pasifika and Asians.
- The make up of the population will change significantly over time with strong growth in Pasifika and Asians and a decline in the European population.

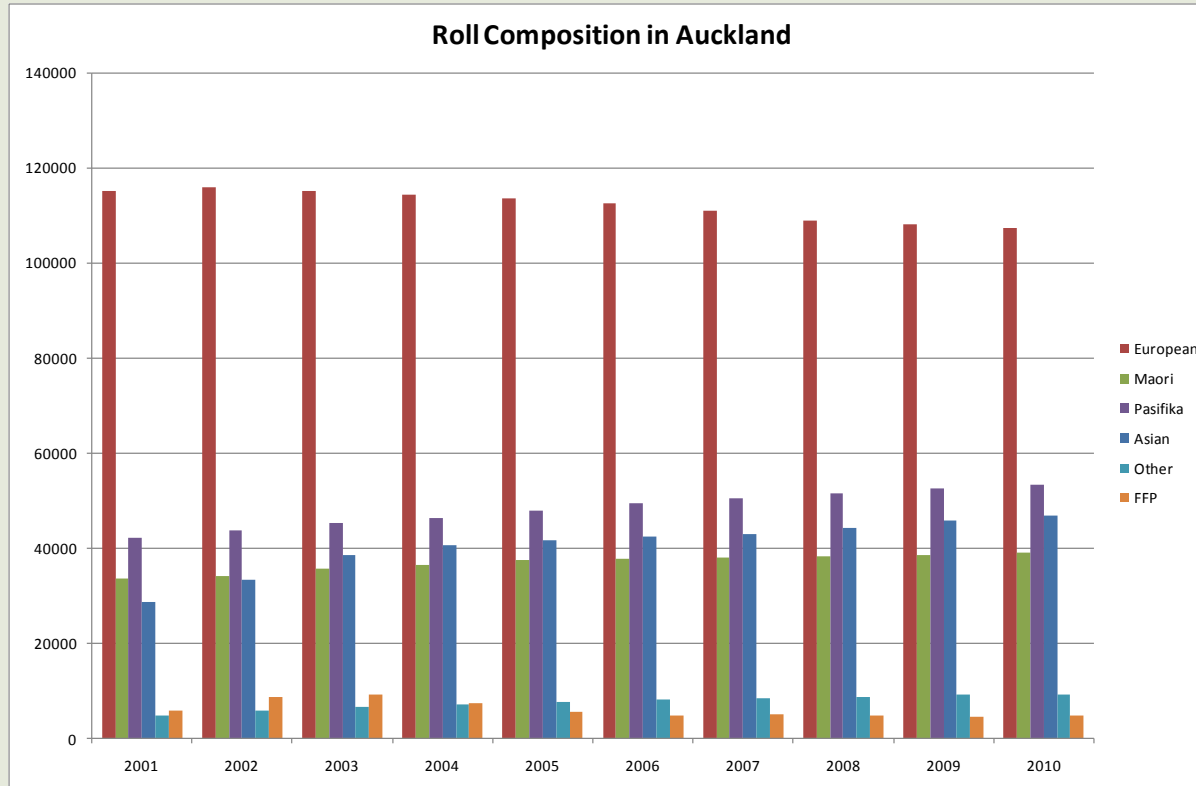
National Birth Trends (Year ending March)



Northern Region Birth Trends (Year ending March)

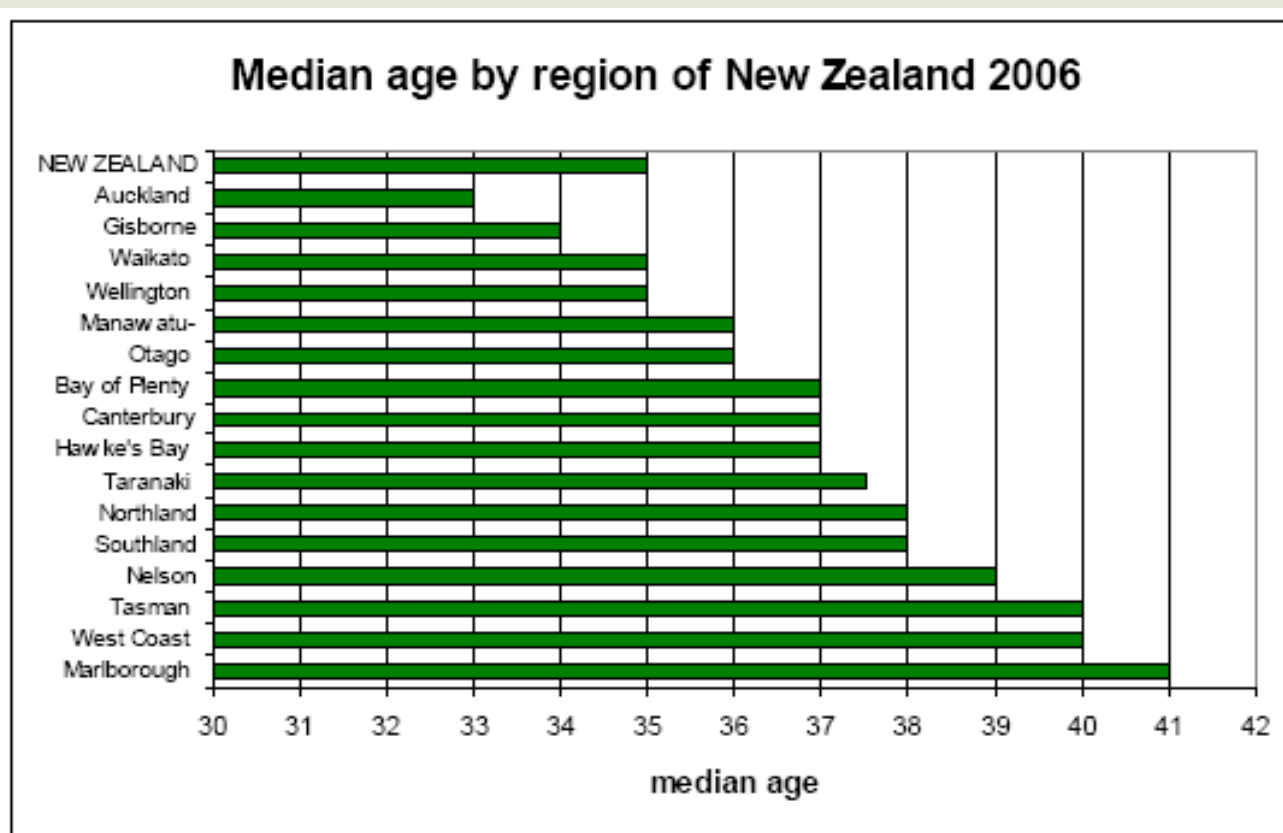


Ethnicity

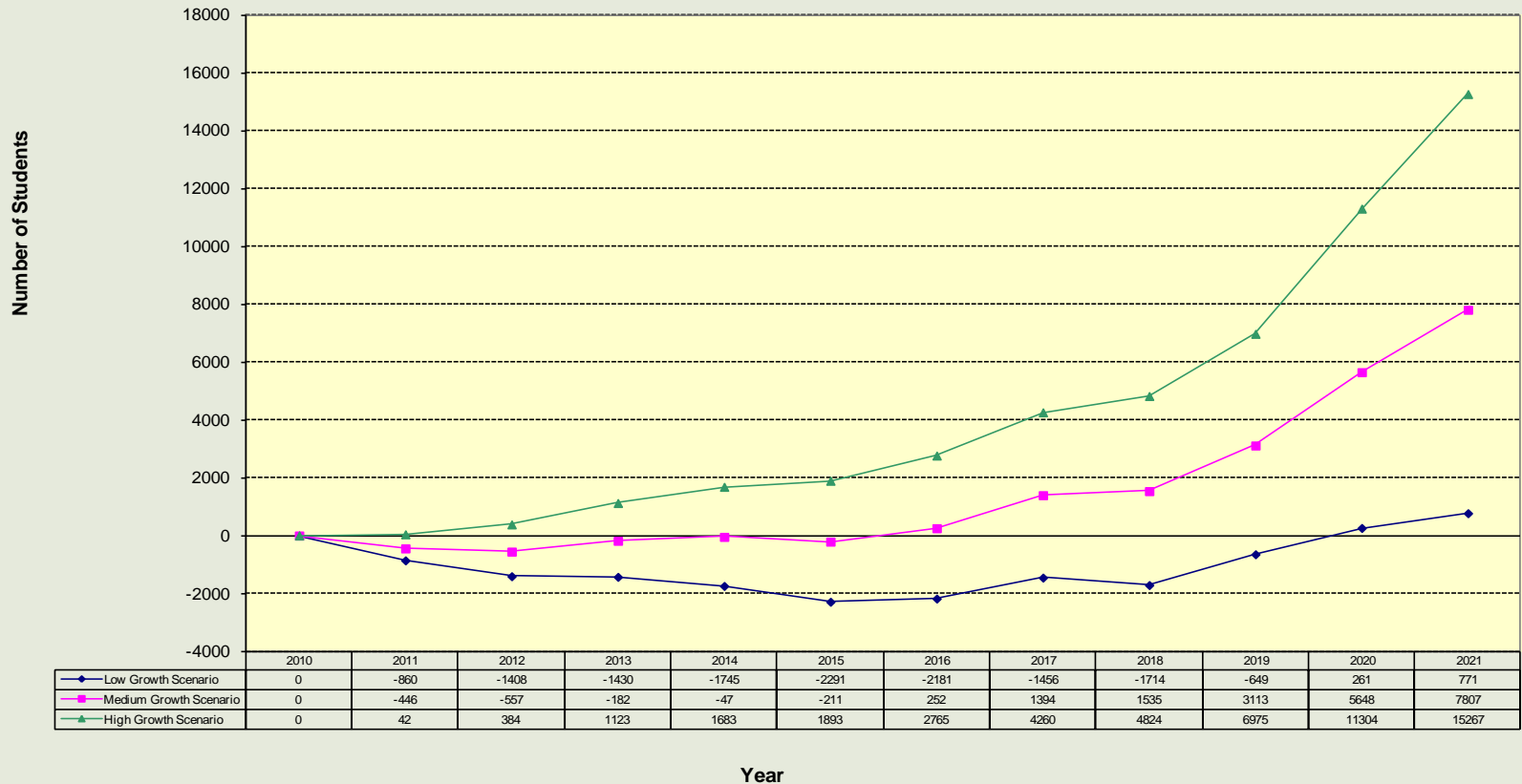


- Declining number of students of European descent (0.8% p.a. decline)
- Increasing number of students of Māori (1.5% p.a. growth) and Pasifika descent (2.4% p.a.)
- Students with Asian ethnicity are the fastest growing group (4.9% p.a.)
- Decline of 17.5% in Foreign Fee Paying (FFP) students over period

Median Age Profile

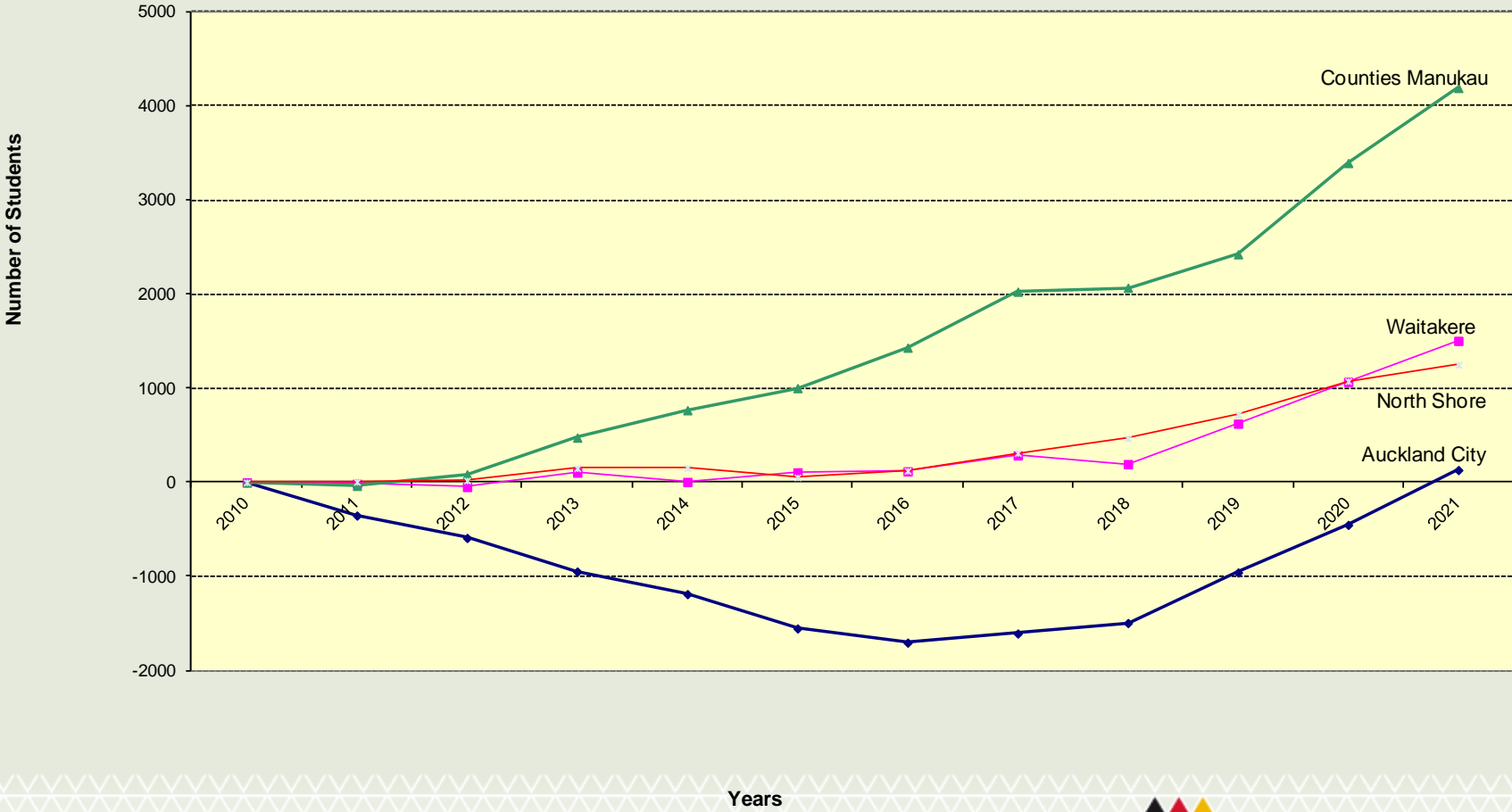


Growth in Auckland 2010-2021



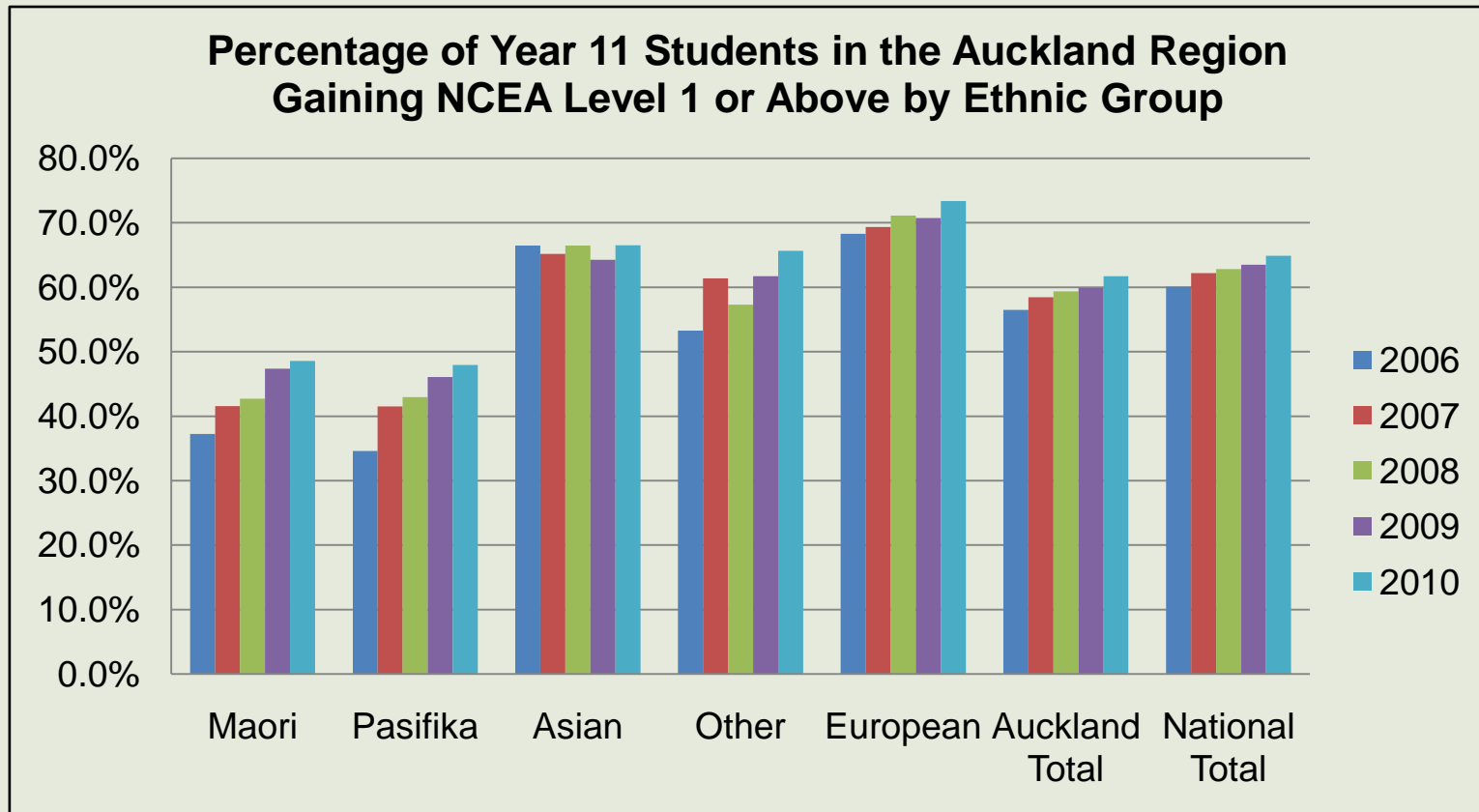
Source: Statistics New Zealand

The real story!

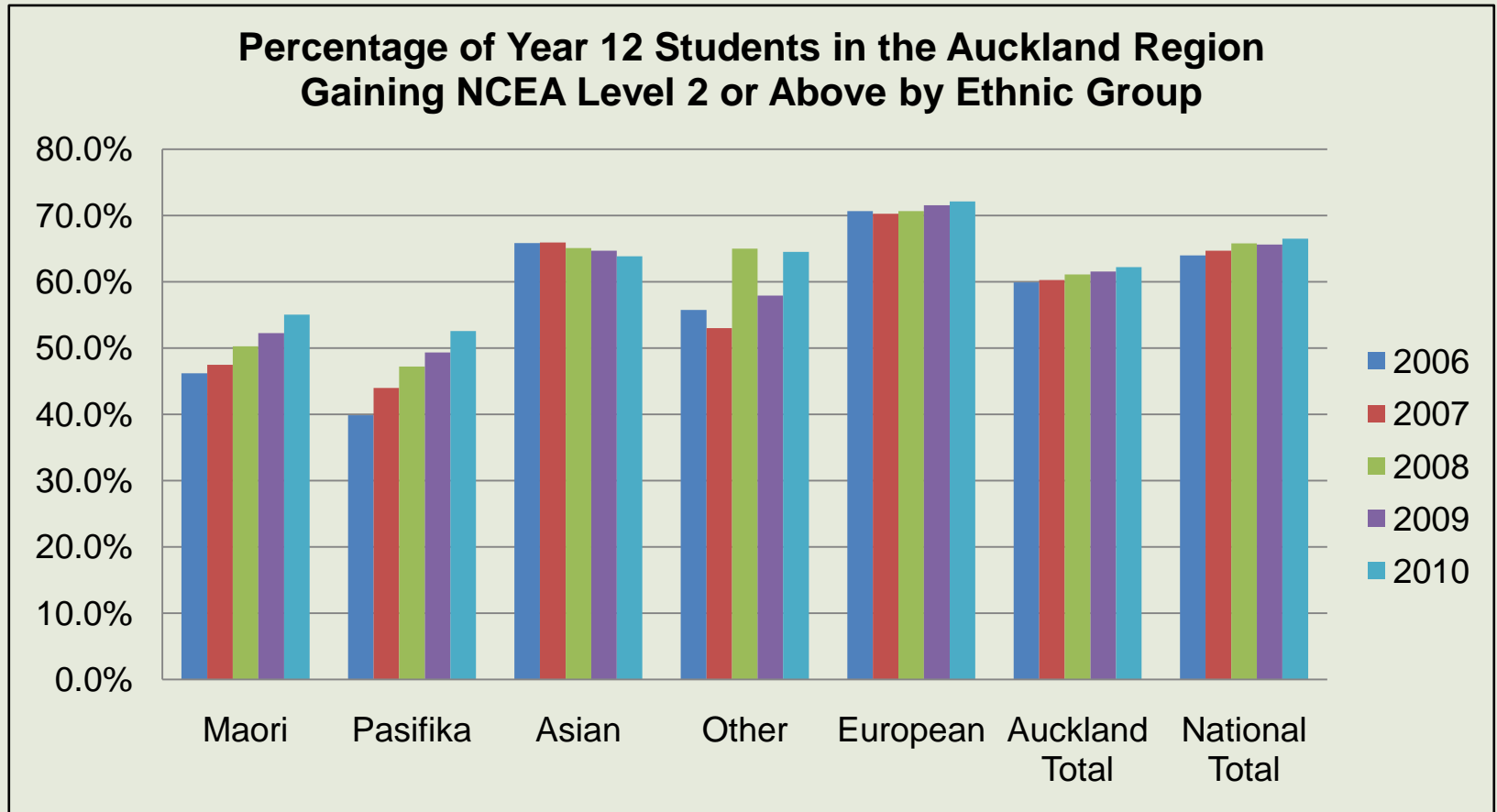


Source: Statistics New Zealand

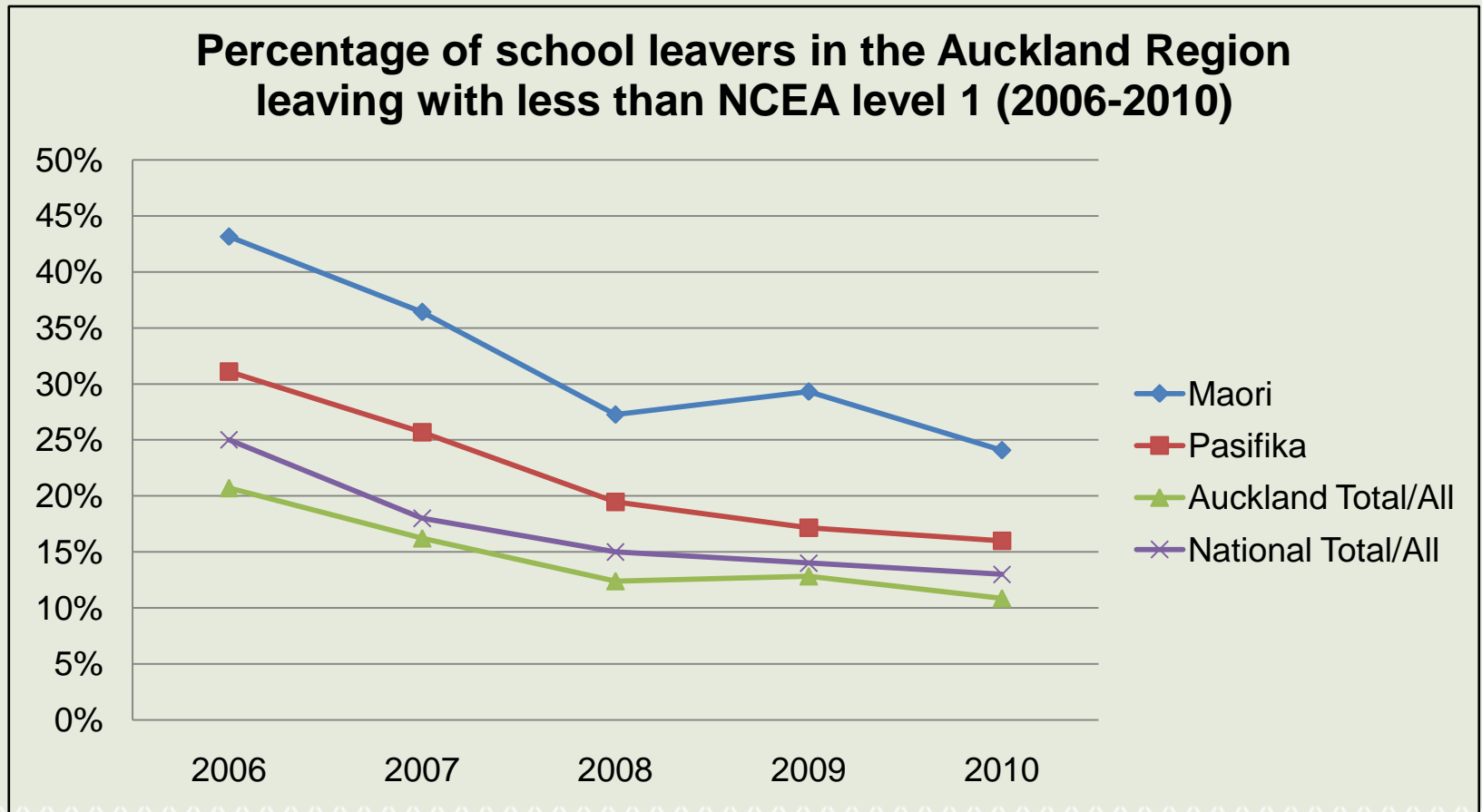
NCEA Level 1 by Ethnic Group



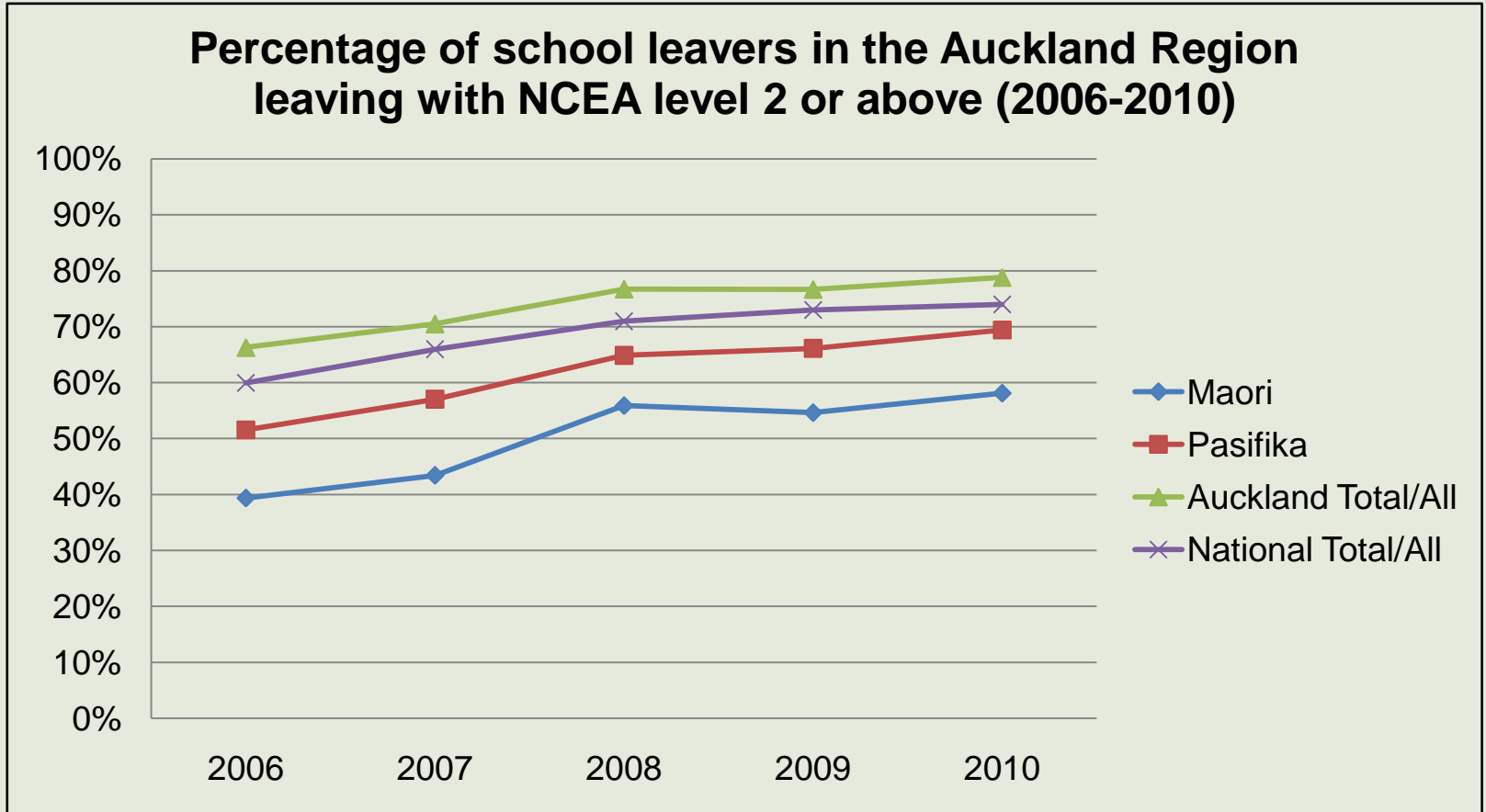
NCEA Level 2 by Ethnic Group



School Leavers with Less than NCEA Level 1 by Ethnic Group

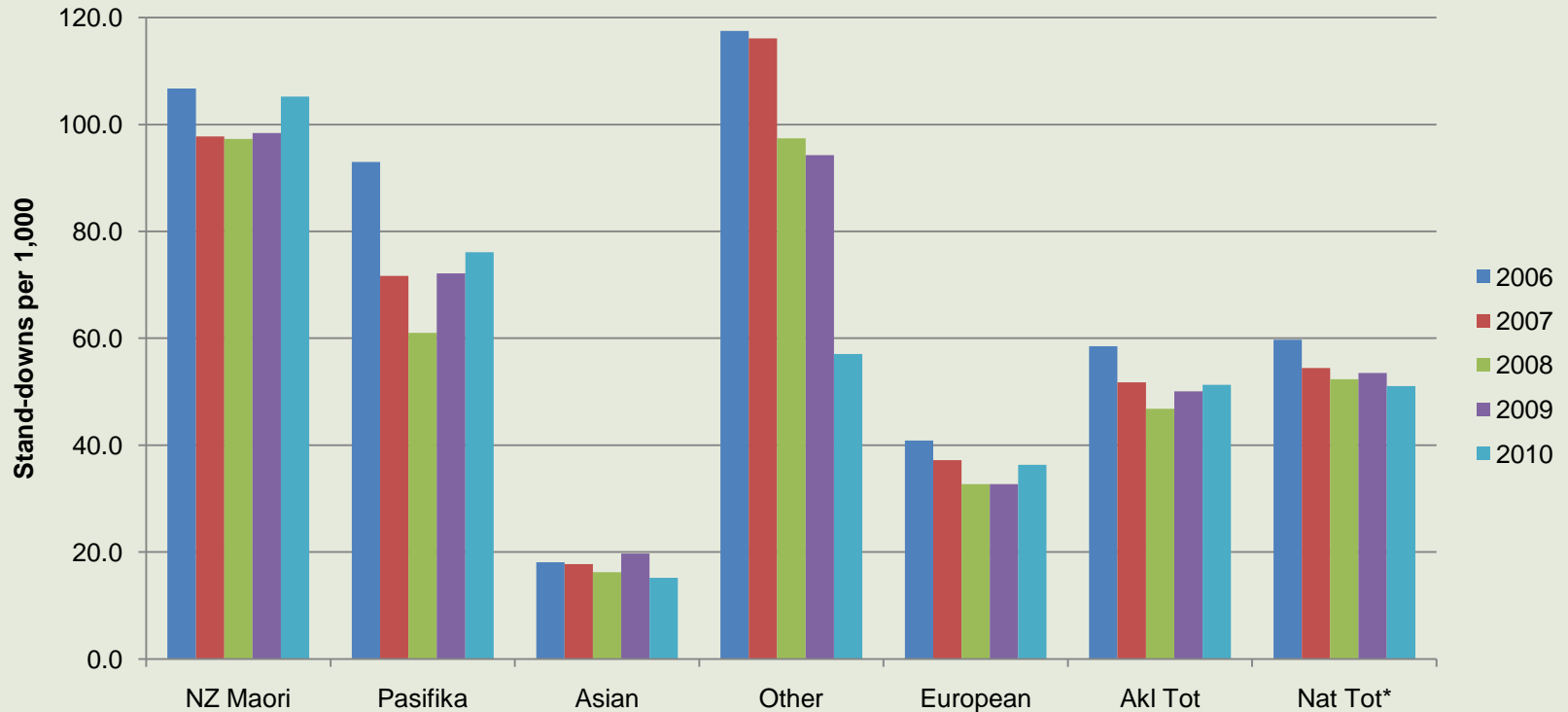


School Leavers with NCEA Level 2 or Above by Ethnic Group

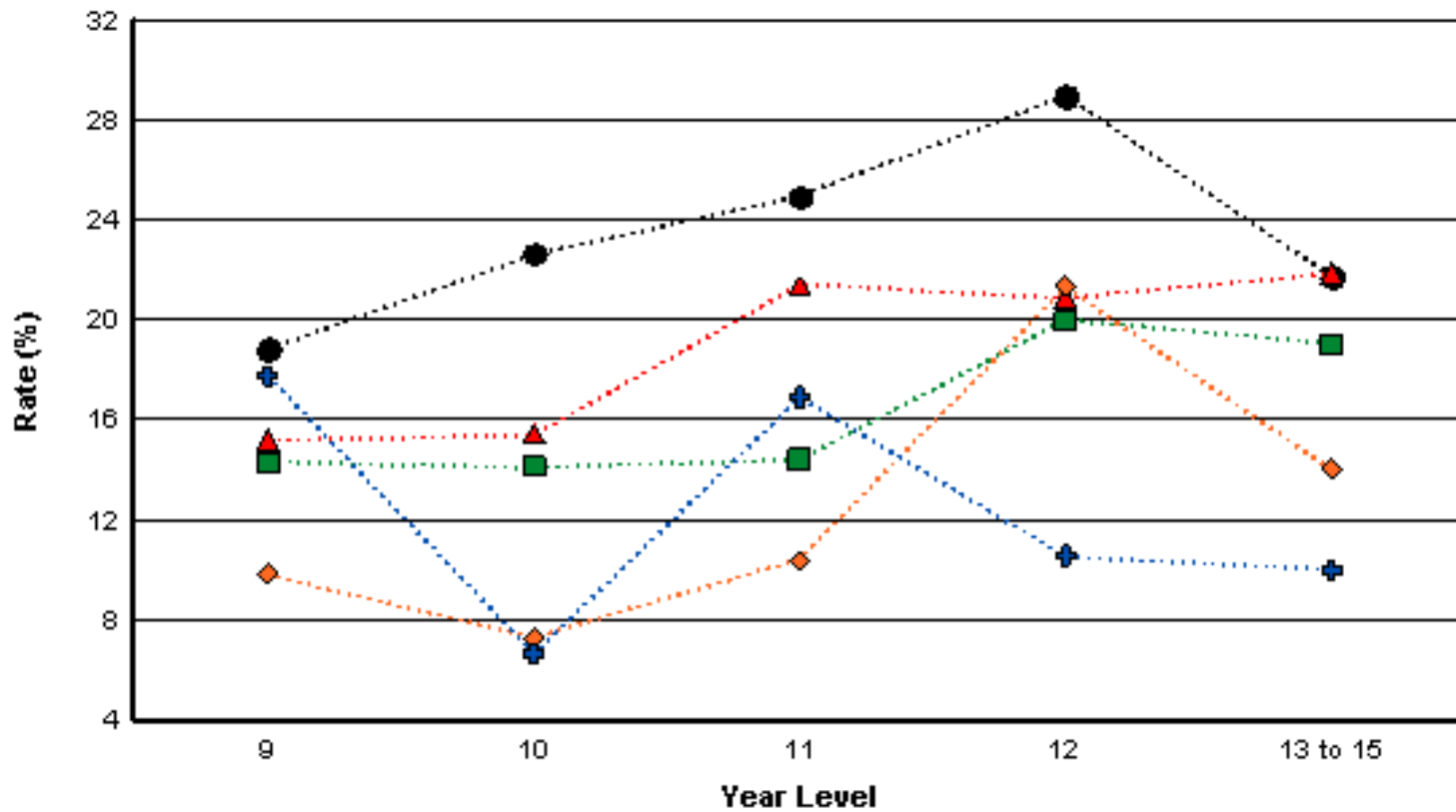
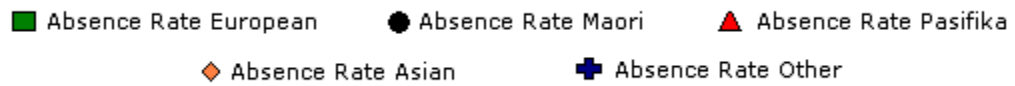


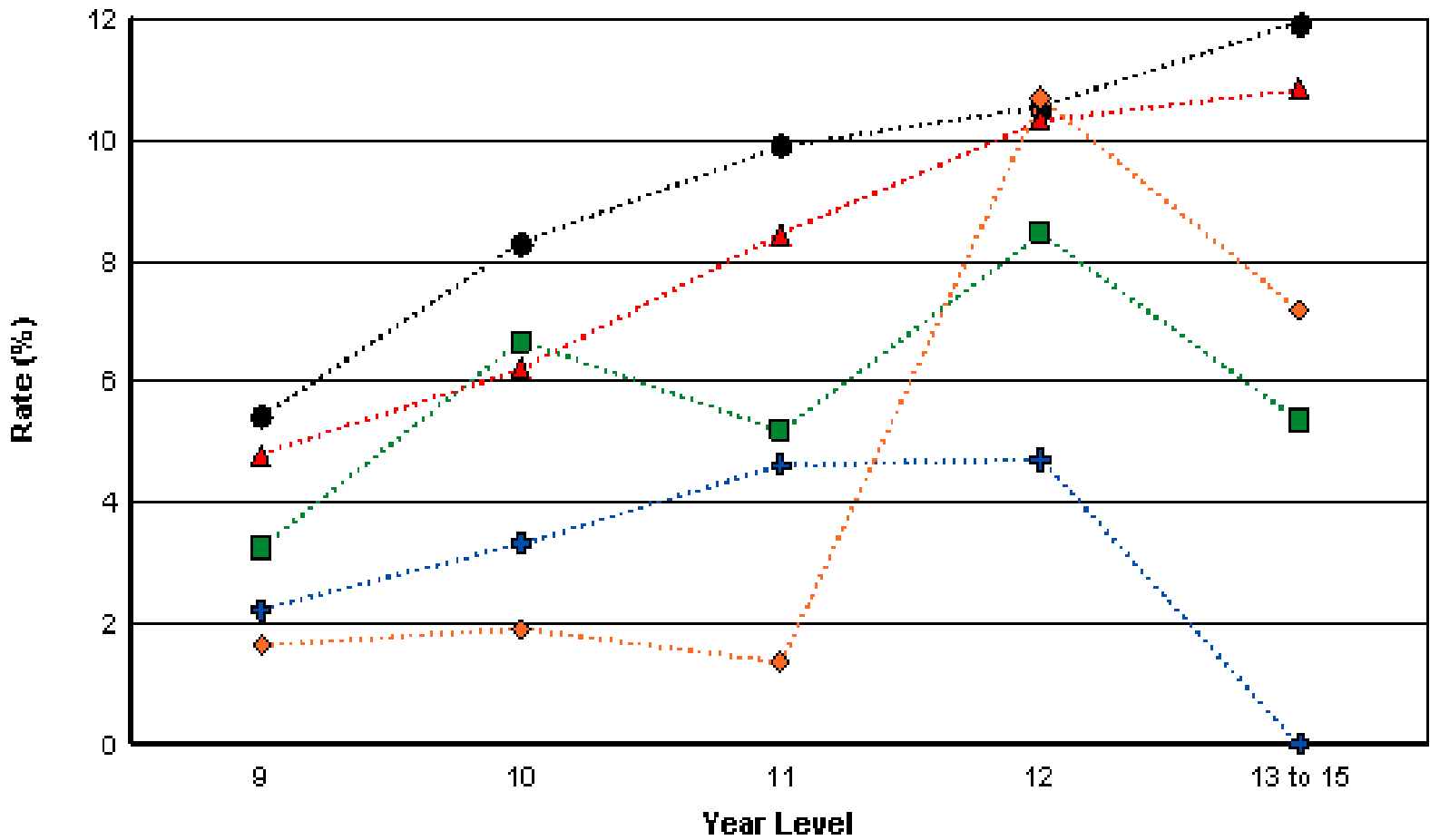
Stand-downs by Ethnic Group

Stand-down Rate per 1,000 Secondary Students in Auckland Region, by Ethnic Group.



| Decile | % for your School | % for Decile |
|--------|-------------------|--------------|
| 1 | - | 58.80% |
| 2 | 64.50% | 59.00% |
| 3 | - | 62.60% |
| 4 | - | 58.40% |
| 5 | - | 62.80% |
| 6 | - | 64.60% |
| 7 | - | 71.00% |
| 8 | - | 72.30% |
| 9 | - | 82.50% |
| 10 | - | 83.20% |





| | Māori | | Pākehā | | Pasifika | | Other | | Total | |
|---------|-------|-----|--------|----|----------|-----|-------|-----|--------|-----|
| | No. | % | No. | % | No. | % | No. | % | Number | |
| Year 11 | | | | | | | | | | |
| Male | 0 | 0% | 0 | 0% | 0 | 0% | 0 | 0% | 0 | 0% |
| Female | 0 | 0% | 0 | 0% | 0 | 0% | 0 | 0% | 0 | 0% |
| Year 12 | | | | | | | | | | |
| Male | 14 | 16% | 4 | 5% | 22 | 26% | 20 | 23% | 60 | 70% |
| Female | 0 | 0% | | 0% | 1 | 1% | 0 | 0% | 1 | 1% |
| Year 13 | | | | | | | | | | |
| Male | 2 | 2% | 2 | 2% | 19 | 22% | 2 | 2% | 25 | 29% |
| Female | 0 | 0% | 0 | 0% | 0 | 0% | 0 | 0% | 0 | 0% |
| Totals | | | | | | | | | | |
| Male | 16 | 0 | 6 | 0 | 41 | 0 | 22 | 0 | 85 | 99% |
| Female | 0 | 0 | 0 | 0 | 1 | 0 | 0 | 0 | 1 | 1% |
| Total | 16 | 0 | 6 | 0 | 42 | 0 | 22 | 0 | 86 | |